



# **# AAMG2021**

## **SPONSORSHIP**

## **ELECTRONIC**

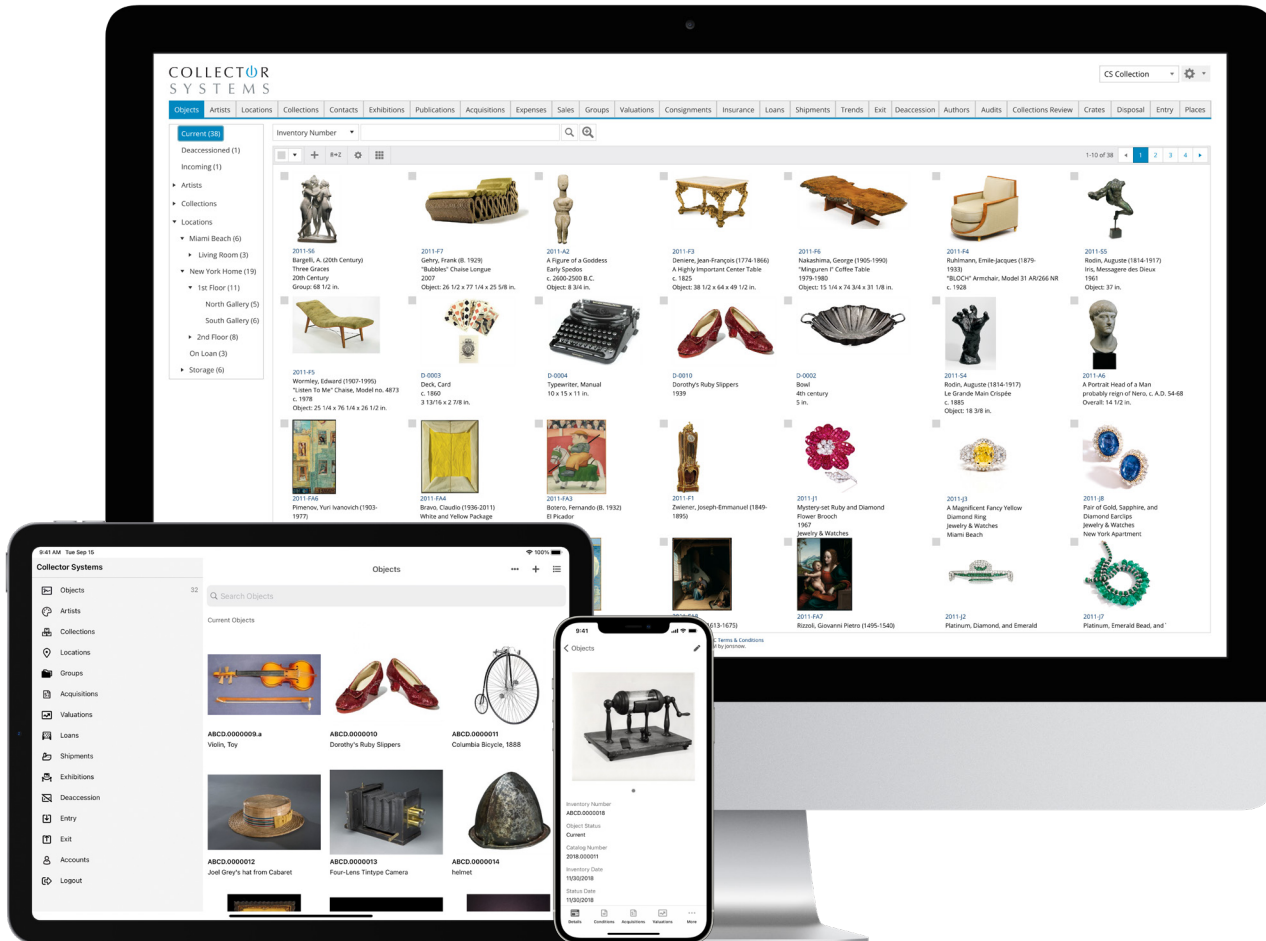
## **DELEGATE BAG**

~~~~~

**Thank you to our  
generous sponsors!**

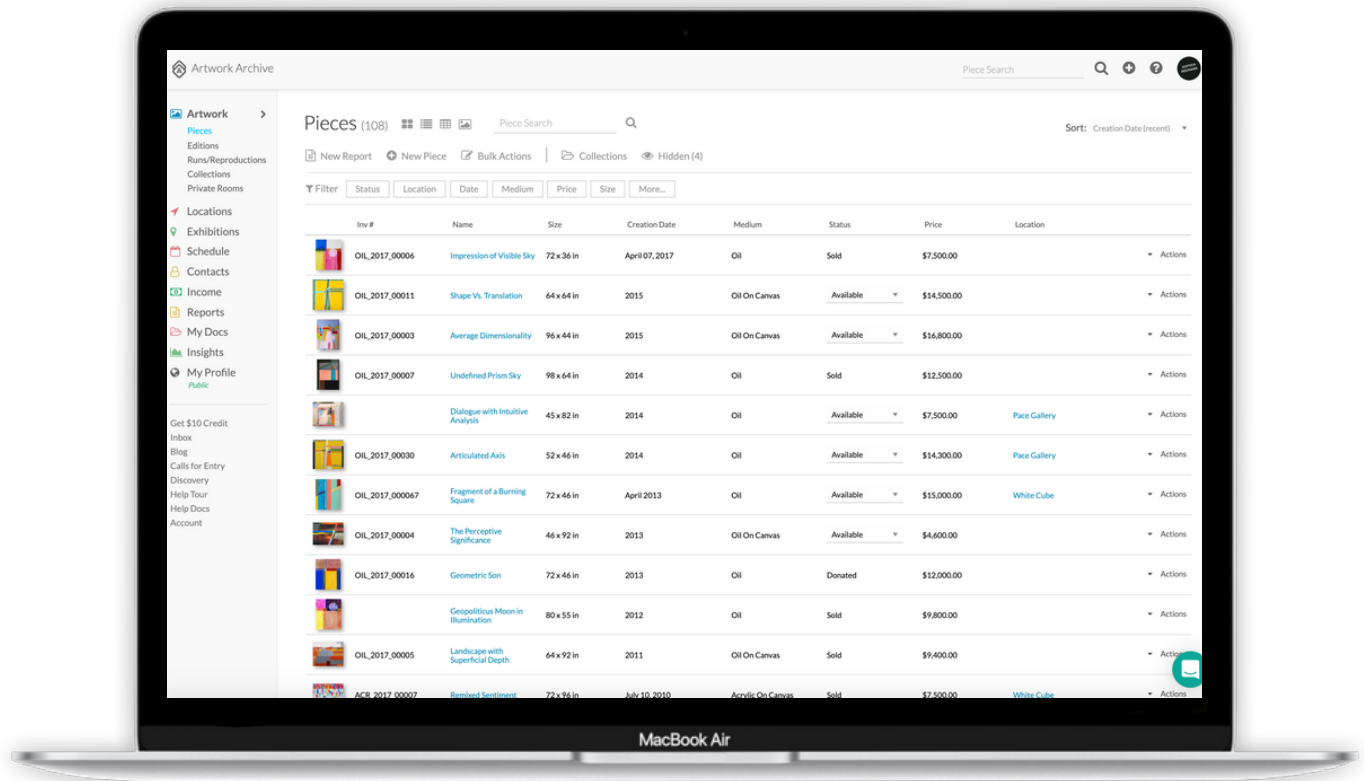
~~~~~

**[AAMG-US.ORG/SPONSORSHIP2021/](https://AAMG-US.ORG/SPONSORSHIP2021/)**



## Powerful. Intuitive. Secure. This CMS? Best there is. Stress level? None.

- Secure cloud-based solution
- iOS and Android apps
- Gallery & API
- Customized reports
- Mobile condition reporting
- Data migration services
- Superior client support
- Controlled vocabularies; built-in Nomenclature, AAT, ULAN, ITIS
- Location history and barcoding
- Loans and Exhibitions
- Crates and Shipping
- Entry, Exit, and Movements
- Accession and Deaccession



# More than just an art database.

Experience the all-in-one platform that art museums and galleries use to manage every aspect of their collections.

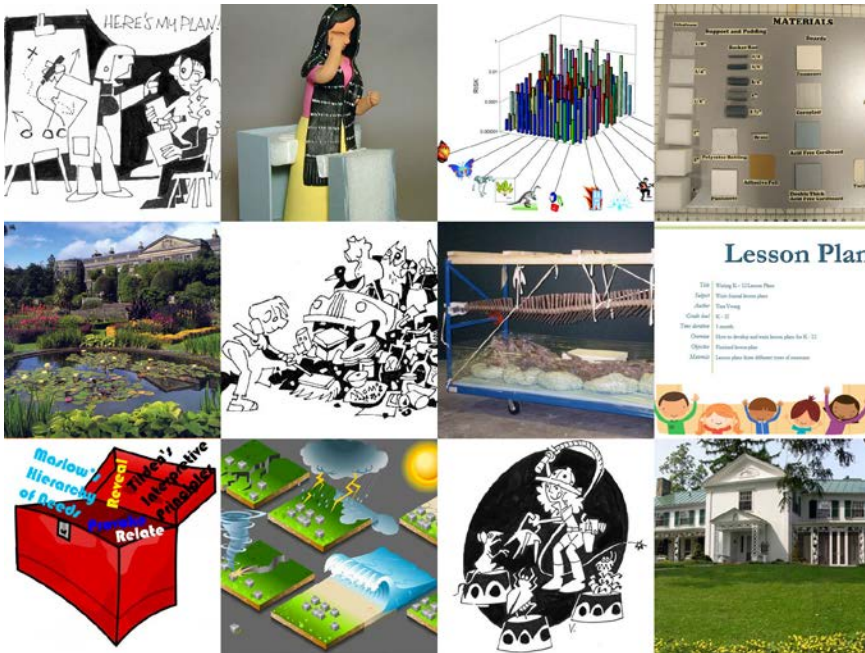
**GET 30% OFF**

[artworkarchive.com/aamg](https://artworkarchive.com/aamg)

A R T W  R K  
A R C H I V E

# ONLINE PROFESSIONAL DEVELOPMENT

MUSEUMSTUDY.COM



# Museum Study



## Upcoming Courses

- Decolonizing Museums in Practice
- Policies for Managing Collections
- Keeping Historic Houses and Museums Clean
- Creating Virtual Learning Opportunities in Museums
- Writing K-12 Lesson Plans for Museums
- Collections Emergencies: Preparedness to Resilience
- Leading Together: Working for and With Your Board of Trustees
- Laws and Collections Management
- Moving Museum Collections
- Rights & Reproductions 1: Intro to IP and Licensing Best Practices
- Climate Change Interpretation
- How to Tell Stories and Construct Effective Exhibition Labels
- Advanced Interpretive Techniques - Interpreting the "rest of the story"
- Integrated Pest Management: The Plan and Implementation

At Museum Study our mission is to help you build a better cultural institution and be a stronger member of the team that carries out the mission of your institution.

To accomplish this, we provide online professional development on a broad range of topics important to running a cultural institution including;

*Administration,  
Exhibits & Public Programming,  
Facilities Management,  
Collections Management, and  
Collection Preservation & Care*

Our goal is to help you develop policies, procedures, and programs to run your institution successfully.



SAQA™

# GLOBAL EXHIBITIONS

[www.saqa.com/globalexhibitions](http://www.saqa.com/globalexhibitions)



*Connecting Our Natural Worlds at the Arizona-Sonora Desert Museum*

PHOTO JAY PIERSTORFF PHOTOGRAPHY



*3D Expression at the Gerald R. Ford Presidential Museum*

**Art** that  
**BRINGS THE**  
**WORLD**  
to your **museum**

Bring new and diverse communities to your museum! Sixteen traveling exhibitions available through 2025! Discount for AAMG member institutions. Affordable and easy to install. Shipping and logistics included.

SAQA Global Exhibitions will work with special budgetary needs to ensure new and engaging exhibitions when you reopen.

## CONTACT

William Reker  
DIRECTOR OF GLOBAL EXHIBITIONS

937.912.5009 • [exhibitions@saqa.com](mailto:exhibitions@saqa.com)



*Forced to Flee at the Ruth Funk Center for Textile Art*

PHOTO BLUEPRINT PRODUCTIONS





# TEXAS HERITAGE MUSEUM

## EXPLORING THE LONE STAR MILITARY EXPERIENCE

Proud member of AAMG | Thank you for your support

[www.hillcollege.edu/museum](http://www.hillcollege.edu/museum)

The Texas Heritage Museum is comprised of three divisions: Galleries & Collection, Historical Research Center, and Hill College Press.

Together the three provide a learning environment that has helped Hill College establish itself as "The College for the Study of History" for students, as well as community members and the general public from all over the world.

### GALLERIES AND COLLECTION



Historical artifacts are exhibited from the Texas Republic through the Vietnam War within the museum galleries and collections that serve as tangible evidence of historical events.

[LEARN MORE](#)

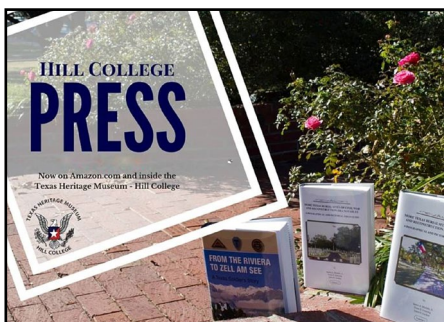
### HISTORICAL RESEARCH CENTER



Widely acknowledged by scholars world-wide as one of the nation's finest US Civil War collection repositories, bringing international distinction to Hill College by advancing scholarly research and education at the college and beyond. Included in the Historical Research Center is an extensive collection of maps, photographic collections, microfilm, and an archival depository that contains numerous files of soldiers' letters, diaries, and unpublished manuscripts from all wars.

[LEARN MORE](#)

### HILL COLLEGE PRESS



The Hill College Press, the only academic press at a community college in Texas, publishes works of original and interpretative history that compliment both the mission of the Texas Heritage Museum and the geographical setting of central and north Texas.

[LEARN MORE](#)



HOME OF THE OFFICIAL  
TEXAS STATE MEDAL OF HONOR  
MEMORIAL TO NATIVE-BORN TEXANS







# weatherspoon art | museum



[weatherspoonart.org](http://weatherspoonart.org)

UNC Greensboro • Greensboro NC