



---

# SUSTAINABILITY NOW!

Empowering Community Adaptation and Transformation

---

2022 Annual Conference  
Hybrid - June 14-17



**Nora Eccles Harrison Museum of Art**  
**UtahState**University.

**Sponsorship Digital Delegate Bag**

# The Nora Eccles Harrison Museum of Art (NEHMA)

at **Utah State University** is Utah's only museum dedicated to modern and contemporary American art. Its collection houses over **5,500 artworks** focused on art from the American West.

Visit **NEHMA** for a cultural experience, a creative date, a class assignment, or a calm place to escape to between classes. **Admission is free and free parking is available!**

## SUMMER HOURS

**Monday:** Closed  
**Tuesday:** 11am-6pm  
**Wednesday:** 11am-6pm  
**Thursday:** 11am-6pm  
**Friday:** 11am-6pm  
**Saturday:** 10am-3pm  
**Sunday:** Closed

## NONI'S COFFEE SHOP & NEHMA STUDY CENTER

NEHMA is the perfect place for a study break. **Noni's Coffee Shop**, located in the Museum lobby, features a full espresso bar and daily soup and salads, including vegetarian and vegan options.

Our **Study Center** features art study drawers, which allow an up-close look at artworks outside our current exhibition. Our **library**, located in the study center, offers digital access to NEHMA's collection in addition to our collection of modern art books.

## STUDENT OPPORTUNITIES

NEHMA regularly offers **paid work, volunteer opportunities,** and **credit internships** for USU students. Students can get an inside look at how a modern art museum functions, including opportunities to learn from our staff and get hands-on experience in a museum setting.



## EXHIBITIONS ON VIEW

### Looking Backward & Forward: 40 Years with NEHMA & What's Next

*February 5 - December 17, 2022*

To celebrate NEHMA's 40th anniversary, the Museum presents an exhibition of forty works of art from the collection, one chosen from each year to trace its growth and evolution, as well as a sneak peek at selections from a promised gift of approximately 700 works of art from renowned collector George Wanlass, the great-nephew of Nora Eccles Harrison, will address what is in store for NEHMA's future.

### Rebecca Campbell: Painting Feminine Power

*April 22 - December 17, 2022*

A survey of works from Rebecca Campbell's prodigious output over the past fifteen years, focusing on the agency she gives the young and adult women in her paintings. Fusing abstraction and figuration, Campbell imbues her epic paintings with a vibrating luminosity which she then fills out with figures and settings composed of decisively applied broad strokes of washes and impasto.

### Unearthed: The NEHMA Ceramics Collection & The Woman Behind It

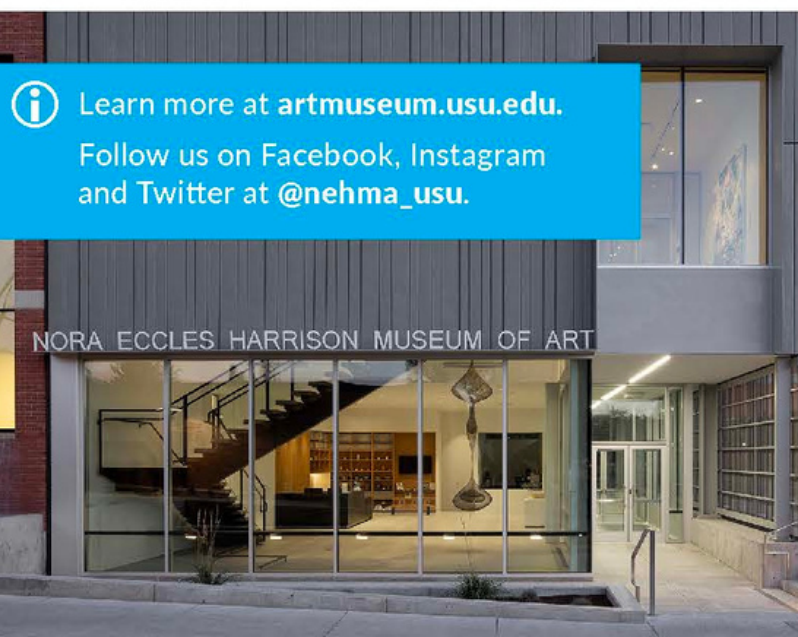
*August 24, 2020 - May 7, 2022*

Featuring approximately 160 ceramic works of art in the NEHMA collection of 1500 ceramics. This selection intentionally highlights both recognized and under-recognized artists, women artists, influential women ceramics educators, and Native American ceramicists with the intention of providing a revised historiography of ceramics in the western United States, including one that brings forth Nora Eccles Harrison's role in ceramics history.

 Learn more at [artmuseum.usu.edu](http://artmuseum.usu.edu).

Follow us on Facebook, Instagram and Twitter at [@nehma\\_usu](https://twitter.com/nehma_usu).

NORA ECCLES HARRISON MUSEUM OF ART



# THANK YOU TO ALL 2022 ANNUAL CONFERENCE SPONSORS



## Artwork Archive is a simple online collection management solution for academic museums and galleries

- Track provenance, locations, exhibitions & loans
- Document purchases, gifts & deaccessions
- Customize, print & share reports
- Schedule and record conservation
- Have contact information at your fingertips
  - Exhibit your artworks online
- Collaborate easily with your colleagues

**30% OFF FOR LIFE**

[artworkarchive.com/aamg](https://artworkarchive.com/aamg)

Starting at \$20/ mo

ARTWORK  
ARCHIVE

CollectionSpace is the leading web-based, open-source collections information management system used to manage the day-to-day activities of museum collections professionals and others who work with art, artifacts, objects, and specimens in the university space.

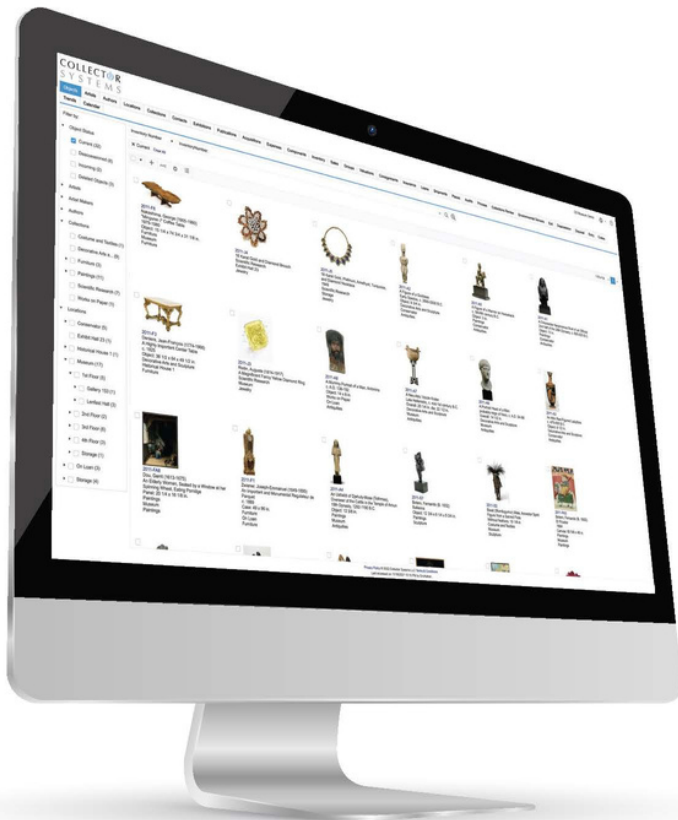
## CollectionSpace provides:

- Standards-based collections management workflows
- Support for diverse collections from art to specimens
- Web-based platform with unlimited user accounts
- Robust tools to store and describe digital assets
- Public discovery tools for museums and consortia
- Native API for data sharing and integrations
- Affordable cloud hosting with LYRASIS

[collectionspace.org/aamg/](http://collectionspace.org/aamg/)



COLLECTOR  
SYSTEMS  
cloud-based collection management software



**Powerful. Intuitive. Secure.**  
**This CMS? Best there is.**  
**Stress level? None.**

- Secure cloud-based solution
- New Public Gallery using WordPress plug-ins
- New API 2.0
- New iOS/Android apps with condition reporting
- New batch location updating and barcoding
- New free text search
- New customization to hide/show and order fields
- Loans and Exhibitions
- Entry and Exit
- Accession and Deaccession

# COME TASTE UTAH STATE'S NEWEST TRADITION!

Visit the only university owned bean-to-bar  
chocolate facility in the world



Café + Chocolate Bars  
Snacks + Gifts + Free Tours



USU Campus, Across  
from Maverik Stadium  
in Blue Square

**AGGIE  
CHOCOLATE**  
Learning & RESEARCH CENTER  
FACTORY™

[aggiechocolate.com](http://aggiechocolate.com)



College of Agriculture & Applied Sciences  
Utah State University

Nutrition,  
Dietetics, and  
Food Sciences

## The 2¢ Club

*congratulates AAMG on another  
successful conference.*

### AAMG

Retired Board Advisory Group

The 2¢ Club members serve as mentors/advisors to others  
in the field, contribute to the annual student scholarship,  
and commit to valuing friendship and collegiality.

THANK YOU TO ALL  
2022 ANNUAL CONFERENCE  
SPONSORS

Thank you AAMG for another  
Inspiring museum conference!

## CULTURAL STRATEGY PARTNERS

Tom Shapiro shares your commitment to  
academic museums' contribution to  
education, scholarship, and communities.  
He helps develop core management tools, such  
as Strategic Plans, Administration and faculty  
engagement, and data-driven assessment.

*Tom is a former board member, long-time  
advisor, and evergreen booster of AAMG!*

**Advancing academic museum ambitions**

[www.culturalstrategypartners.com](http://www.culturalstrategypartners.com)

THANK YOU TO ALL  
2022 ANNUAL CONFERENCE  
SPONSORS



EXPLORING THE LONE STAR MILITARY EXPERIENCE



Funded by

**Utah Legislature**



Utah Division of  
**Arts & Museums**

ERCO

SOUTHERN  
UTAH  
MUSEUM of  
ART



MUSEUM OF ARCHAEOLOGY  
AND ANTHROPOLOGY

MUSEUM *of*  
ANTHROPOLOGY

UtahStateUniversity™