



Opening Up:

Creating New Field Guides to Trust, Service, and Responsibility

2023 Annual Conference

June 12-15

The University of Kansas

Sponsorship Digital Delegate Bag



Raise funding. Grow patrons.
Connect with your public.

ABOUT US

ArtShare is a museum- and art-first company, partnering with museums to invite millions of everyday people to engage with art by purchasing shares. Why? Because inviting ownership changes everything.

Today's patrons want a more personal and lasting way to donate to museums and artists they love. Investors want to invest in things they emotionally connect with, unlike stocks. ArtShare helps museums deliver both so millions of people can newly connect with art, artists, and museums that they love.

LAUNCHING IN 2024

Join our waitlist today, space is limited!

OUR SERVICES

- ✓ Receive artwork on loan with all expenses covered
- ✓ Fundraise for exhibitions
- ✓ Fundraise for other purposes
- ✓ Enable patrons to invest in artworks from your collection
- ✓ Build custom solutions for your museum's needs

<https://art-share.io>

CHRISTIE'S

MUSEUM SERVICES

Our experienced team partners with all types of institutions on a myriad of projects. We look forward to building a relationship with you and working together to meet your institution's unique needs.

Appraisals

Christie's provides appraisals at little to no cost for insurance, fair market value, and the federal indemnity process.

Building your Collection

We provide assistance at all stages of the acquisition process, from maintaining 'wish lists', facilitating purchases, and case-by-case payment arrangements.

Assistance with Selling

Our team presents your artworks both at auction and through private sales to maximize their potential, while partnering with you to ensure a clear message is communicated that is reflective of your goals.

Advisory Services

Through our experiences with clients, we offer expert guidance on best practices, public relations, collection review, fundraising, and strategic planning.

Additional Offerings

Beyond these areas, our team provides programming content, exclusive loan opportunities, access to our network of collectors, and a wide variety of other opportunities for partnership.



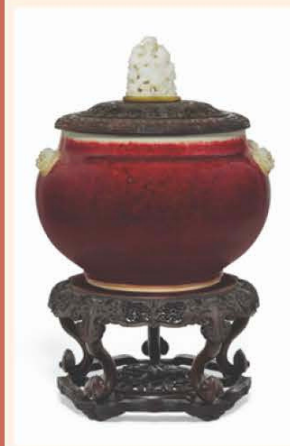
Exceptional Results



LYNNE DREXLER
Flowered Hundred, 1962

Estimate: \$40,000 - 80,000
Sold for: \$1,197,000
Christie's New York, 2022

**SOLD BY THE FARNSWORTH ART MUSEUM
WITH PROCEEDS DEDICATED TO THE
ACQUISITION FUND**



CHINESE, 18TH-19TH CENTURY
*A Jade-Embellished Copper-Red-Glazed
Compressed Globular Jar*

Estimate: \$10,000 - 15,000
Sold for: \$160,000
Christie's New York, 2021

**SOLD BY THE YALE UNIVERSITY ART GALLERY
FOR THE BENEFIT OF ACQUISITION FUNDS**



GEORGE ROMNEY
*Portrait of Mrs. Henrietta Smith (1735-
1795), three-quarter-length*

Estimate: \$150,000 - 250,000
Sold for: \$400,000
Christie's New York, 2020

**PROPERTY OF GROVE CITY COLLEGE, SOLD
TO BENEFIT THE RESTORATION OF THE PEW
MEMORIAL ROOM IN THE J. HOWARD PEW
FINE ARTS CENTER AND THE RENOVATION OF
THE HENRY BUHL LIBRARY.**

Benefits of Working with Christie's



Patron engagement



Auction and private sales



Programming and events

Tailored Consultations

Our dedicated team is well-versed in institutional processes and governance. We are sensitive to timelines, internal and external expectations, public perceptions, and other factors unique to non-profits.

An Experienced Team

We have nearly 50 years of combined experience in this field and are the most seasoned museum services team in the auction business.

A Streamlined Process

Our team will oversee everything to ensure a smooth and positive experience.

Contact Us



Samantha Koslow

SVP, Director, Head of Museum and Corporate Collection Services

skoslow@christies.com

212-636-2931



Ben Whine

SVP, Director of Museum and Institutional Partnerships

bwhine@christies.com

212-636-2614



Katherine Drake

Museum Services Manager

kdrake@christies.com

212-636-2619

christies.com/museums

MuseumExchange

Museum Exchange is the first digital platform for art donations. Our end-to-end service connects museums, universities, and hospitals with donors across North America and manages every step of the donation process.

225+ Museums; 45+ States & Provinces
575+ Artworks Donated To Date

Image: Tony Cragg, *Versus*, 2013. Painted Bronze.
74 x 61 x 23 inches. Memorial Art Gallery of
University of Rochester, Gift of David Brush.
Courtesy the artist and Marian Goodman
Gallery. © Tony Cragg



Museum Exchange provides a unique opportunity to grow our contemporary collection and fill gaps where needed. As a teaching collection that supports pedagogy and provides students with opportunities for direct engagement with original works of art, we are grateful to add works by renowned contemporary artists, which will expand the educational outreach across our campus.

– Jennifer Finkel, Acquavella Curator of Collections, Wake Forest University

www.museumexchange.com
info@museumexchange.com

CollectionSpace is a web-based,
open-source collections management system
for museums and more.

CollectionSpace is used and designed by museum collection professionals who work with art, artifacts, objects, and specimens. CollectionSpace manages the day-to-day workflows of a diverse group of museums, galleries, universities, and historical societies. CollectionSpace provides:

- Fields and workflow procedures for diverse collections including archaeology, art, history, and natural history
- Web-based interface with unlimited user accounts
- Public Browser for sharing collections with your community
- Tools for importing data from CSV worksheets
- Native API for data sharing and integrations

We are
more than
software.



We are a
community.



THANK YOU TO ALL
2023 ANNUAL CONFERENCE
SPONSORS



**CULTURAL
STRATEGY
PARTNERS**

Tom Shapiro congratulates
AAMG for another inspired gathering!

As a past AAMG board member,
long-time advisor, and evergreen booster,
Tom supports museums' contributions to
education, scholarship, and communities.

- △ **Strategic Planning**
- △ **Administration and Faculty engagement**
- △ **Data-driven assessment**
(and not graphic design!)

**Cultural Strategy Partners helps
advance academic museums**

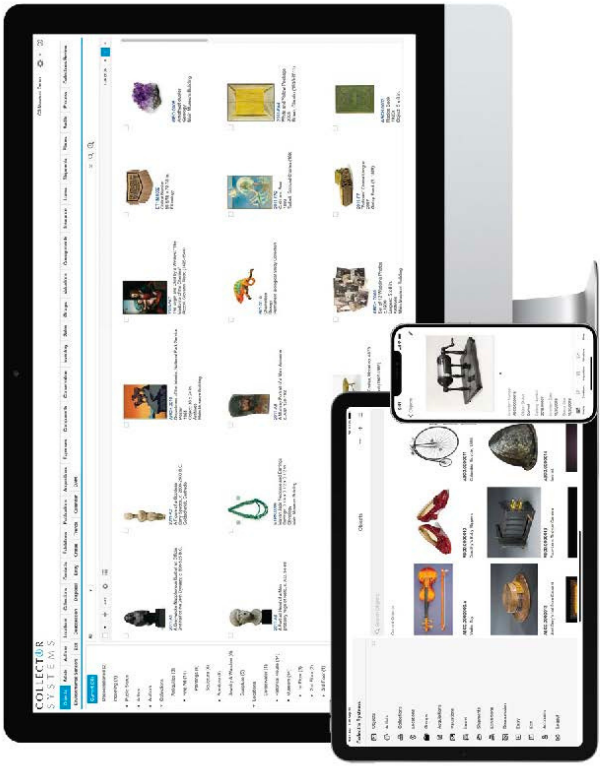
(312) 810.7500 www.culturalstrategypartners.com

THE
**JAYHAWK
EXPERIENCE**

LET US HELP YOU CREATE
**A REMARKABLE
MUSEUM EXPERIENCE.**

DIMIN.COM/CONTACT

**Dimensional
Innovations**



THANK YOU TO ALL
2023 ANNUAL CONFERENCE
SPONSORS

Powerful. Intuitive. Secure.

info@collectorsystems.com

www.collectorsystems.com



TEXAS HERITAGE MUSEUM
EXPLORING THE LONE STAR MILITARY EXPERIENCE
Proud member of AAMG | Thank you for your support
www.hillcollege.edu/museum

ERCO

Design with flexibility.
Design with innovation.
Design with ERCO.

Dallas Museum of Art. © ERCO GmbH, www.ercogroup.com
Photography: Daniel Salemi

Read more about ERCO here



**HOOD
MUSEUM
OF ART**

Centering art and people in teaching
and learning through inclusive and
robust academic, cultural, and civic
engagements with art and its histories.

Dartmouth College, Hanover, NH

THANK YOU TO ALL
2023 ANNUAL CONFERENCE
SPONSORS



**Create scholarly,
visually rich digital books
that last with Quire,
Getty's free publishing tool**



Sign up for our monthly newsletter
for news and events, feature updates,
community highlights, and information
about our monthly open office hours

 **quire**[™]

<https://quire.getty.edu>
quire@getty.edu



Spacesaver is committed to providing innovative solutions that help manage risk, optimize space, and maintain an ideal preservation environment for all collections.

800.492.3434 // SPACESAVER.COM

"They always say time changes things, but you actually have to change them yourself." – Andy Warhol



**VISIT OUR
BOOTH**

**"#1 Art & Museums event
of the week"**

★★★★★
The New York Times

**"Best innovations
in the art world"**

★★★★★
artnet

**"Best exhibition
digitization tool"**

★★★★★
SPINLAB THE MUSEUM
ACCELERATOR

Not everybody can go and see your exhibit in person. We offer an immersive virtual exhibition platform to create new shows in your digitized space and reach those who live far away.



SILVER SPONSOR 2023 **AAMG**
WALTER'S CUBE



**THANK YOU TO ALL
2023 ANNUAL CONFERENCE
SPONSORS**

zetcom

museumplus

**THE STANDARD IN
COLLECTIONS
MANAGEMENT
SOFTWARE.**

FEATURES

END-TO-END COLLECTIONS
MANAGEMENT
WORKFLOW
EXHIBITION PLANNING +
MANAGEMENT
OBJECTS + ARCHIVES +
DIGITAL MEDIA
API



SPENCER MUSEUM of ART

The University of Kansas



Nora Eccles Harrison Museum of Art
UtahStateUniversity.

